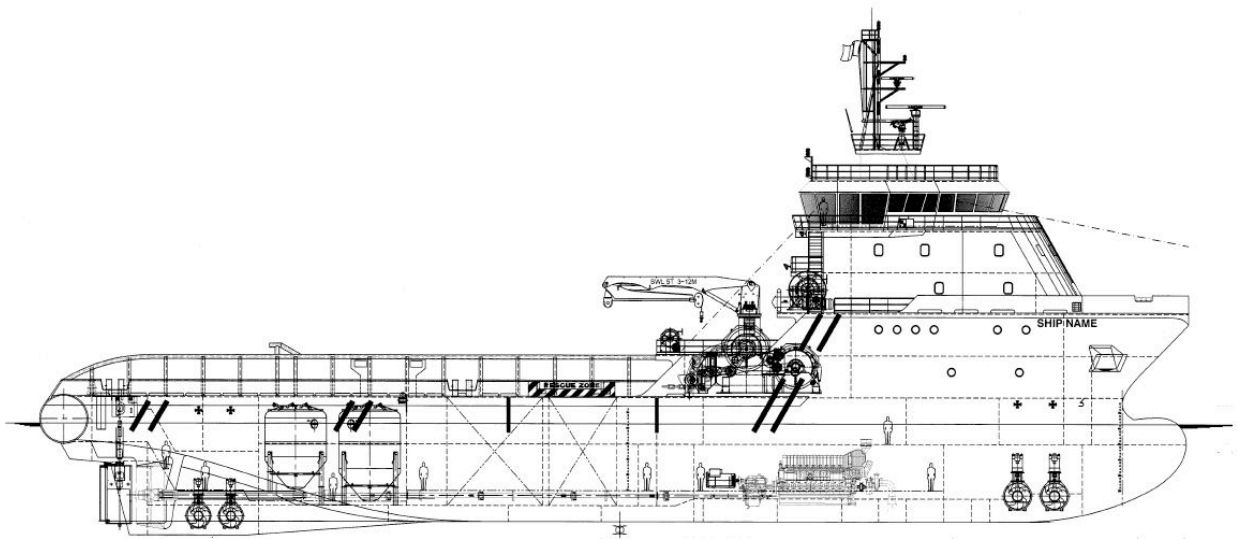




# SovereignGlobal

## Solutions Middle East

### 8,000BHP ANCHOR HANDLING TUG/SUPPORT VESSEL



#### MAIN PARTICULARS

##### General Information

Bollard Pull : 100 T at 100% MCR  
 Speed : 14 knots at draft = 5.0 m  
 Class : American Bureau of Shipping

ABS+A1 (E) Offshore Support Vessel (AH, Supply, Tow, FFV 1), SPS, +AMS, +DPS-2, +ACCU, UWILD

##### Principal Dimension (approx.)

LOA : 74.50 m  
 Breadth Moulded : 18.00 m  
 Depth Moulded : 8.00 m  
 Design Draft : 5.50 m  
 Max. Draft : 6.30 m

#### ACCOMMODATION

Total : 36 men  
 4 x 1-man cabin  
 6 x 2-man cabin  
 5 x 4-man cabin

With galley, hospital, mess room, and air-conditioned throughout

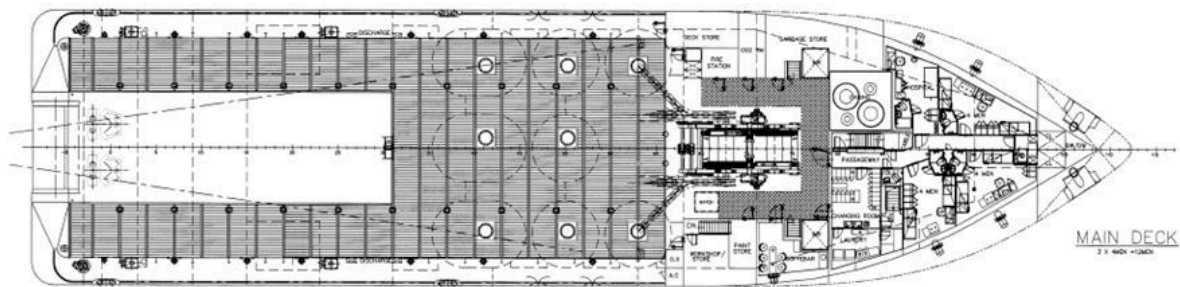
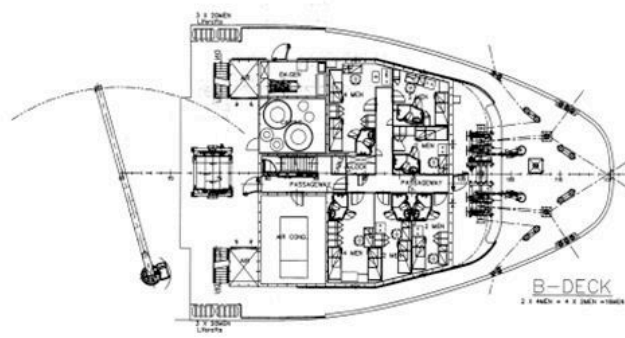
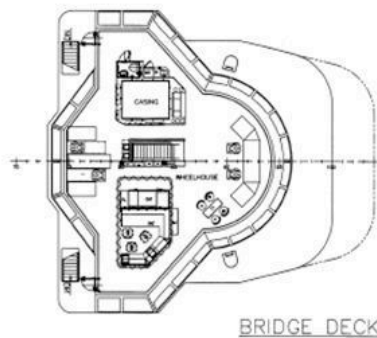
#### CAPACITY

Deadweight : 2,400 MT at draft = 6.3m  
 Fuel Oil : 700 m<sup>3</sup>  
 Ballast/ Drill Water : 1,500 m<sup>3</sup>  
 Freshwater : 700 m<sup>3</sup>  
 Liquid Mud/Brine : 700 m<sup>3</sup>  
 Dry Bulk Cargo : 215 m<sup>3</sup>  
 Cargo Deck Area : 550 m<sup>2</sup>



# SovereignGlobal Solutions Middle East

## 8,000BHP ANCHOR HANDLING TUG/SUPPORT VESSEL



### MAIN EQUIPMENT

Main Engine	: 2 x 3,000kW/750RPM MAK 9M25C IMO II Main Engine
Generator	: 2 x 425ekW Caterpillar C18
Emergency Generator	: 1 x 94ekW Caterpillar C4.4
Propeller	: 2 x In-line CPP, Caterpillar MPP 850f
Bow Thruster	: 2 x 700kW Caterpillar MTT216CP
Stern Thruster	: 2 x 400kW Caterpillar MTT113CP

### DECK MACHINERIES

Combined Windlass/ Winch	: MacGregor Hydraulic Windlass/ Mooring Winch MG-HAM/DGGD- 40U3-*802U1150, 20T drum Brake Holding (static, 1 <sup>st</sup> layer)
Tugger Winch	: MacGregor Hydraulic Tugger Winch, 15T Static Brake Holding
Towing & Anchor Handling Winch	: MacGregor Hydraulic AH/ Towing Winch, with 270T Drum Brake Holding (static, 1 <sup>st</sup> layer)
Deck Crane	: 1 x 5T/3m-12m outreach TTS Knuckle Boom Crane

### NAVIGATION/COMMUNICATION

Radar	: 1 x S-band ARPA with TFT LCD display 1 x X-band ARPA with TFT LCD display
Navigation	: 2 x DGPS
AIS	: 1 x AIS (IMO approved)
Gyro Plant	: 3 x Digital gyro compass system
Autopilot	: 1 x Autopilot in forward bridge console
Echo Sounder	: 1 x Echo sounder with 200kHz transducer
Speed Log	: 1 x Speed Log range -10 to 45 knots

### CARGO DISCHARGING RATE

Cargo Oil	: 1 x 150 m <sup>3</sup> /hr at 7 bar
Cargo Freshwater	: 1 x 150 m <sup>3</sup> /hr at 7 bar
Ballast/ Drill water	: 1 x 150 m <sup>3</sup> /hr at 7 bar
Brine	: 1 x 100 m <sup>3</sup> /hr at 20 bar
Liquid Mud	: 1 x 100 m <sup>3</sup> /hr at 20 bar

### MISCELLANEOUS

External Fire	: 2 x Fire Pump (1,650m <sup>3</sup> /hr each)
Fighting (Fifi 1)	: 2 x Fire Monitor (1,200m <sup>3</sup> /hr each)
Dynamic Positioning	: Kongsberg DP2 system with Independent Joystick System (K-Pos DP-21)